



Greenlam

CLADS

EXTERIOR GRADE COMPACT LAMINATES

For those who believe a façade should be more than just a surface -

We're not here to prescribe design,

but to stand behind bold visions as a trusted partner and a quiet enabler.

You imagine exteriors that turn heads.

We make sure they don't fade, crack, warp, or give up on you.

Global finesse?

World-inspired, made modern and contemporary for today's spaces.

Stone, but better than stone?

Stone-textured realism - lighter, faster to install, easier to love.

Colours, textures, sizes... you choose.

We deliver the goodness at a speed that keeps up with ambition.

Rain, sun, humidity, shifting climates -

We take the challenge, so creations stay pristine.

And when the world asks,

"Who made this?"

We'll smile quietly from the most admired corners,

Because creations that feel Truly Yours deserve to endure.

Here's to every façade that becomes a statement.

Here's to a partner that is, always;

Cladly Yours.



Images used are for representation purpose only

CONTENTS

About Greenlam Industries	02
Greenlam ESG Goals	04
About Greenlam Clads	06
Product Construct	08
Application Areas	10
What Makes Us Class Apart	14
Finishes	
Jupiter	16
Suede	22
Categories	
Patterns	24
Woods	30
Colours	40
Design Lab	48
Technical Specs	50



Greenlam is amongst the world's top 3, Asia's largest, and India's No. 1 surfacing solutions brand. With its presence in over 120 countries, Greenlam has focused on developing quality products with a great passion for innovation.

It offers end-to-end surfacing solutions spread across decorative laminates, compact laminates, interior and exterior clads, restroom cubicles and locker solutions, decorative veneers, engineered wooden floors, doors, plywood, and pre-laminated chipboard. With multiple state-of-the-art manufacturing facilities across the country, it is the first choice of architects, interior designers, and homeowners when it comes to transforming living spaces.

We work in harmony with our environment. Greenlam thinks and acts to save and preserve nature in its pristine form by ethical sourcing of materials from the world over. Coupled with this, the products offered by Greenlam are Greenguard Certified, Anti-Virus, Anti-Bacterial, and Anti-Fungal, thereby ensuring they are environment-friendly and safe to use. With a robust network of over 40,000 distributors and dealers, Greenlam is just a call away to give your spaces a new look.



*Images used are for representation purpose only.

DESIGNING TOMORROW RESPONSIBLY

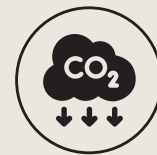
Greenlam ESG journey is based
on 4 key philosophies



GOAL 01

Net Zero Carbon Emission & Water Positive

- Net Zero CO₂ (scope 1 & 2) by 2030*
- 100% Groundwater recharge at factories by 2027
- 20% reduction in transport emissions upstream & downstream by 2030.



GOAL 02

Recycling & Eco Design for Resource Efficiency

- 50% recycled paper use by 2027
- Support new plantations for over 50% of our wood needs by 2030
- 50% wood from certified or verifiable sources by 2035
- Zero waste to landfill by 2030



GOAL 03

Safety, Well-Being, & Engagement

- Total reportable incident rate <1% by 2027
- 10% improvement in last 3 areas of employee satisfaction
- Learning & development for all employees



GOAL 04

Relationships Built on Trust

- > 90% suppliers conforming to business partner code of conduct by 2027.
- Strategic suppliers tracked for supplier sustainability by 2027
- Measurable impact for our communities & harvesters
- Net Promoter Score implementation for customers



*At manufacturing level



CLADS
EXTERIOR GRADE COMPACT LAMINATES

Exterior Surface Solutions

Elevate exterior façades from mere surfaces to defining statements. Crafted for architects and designers who see the exterior as an extension of their vision, Greenlam Exterior Grade Compact Laminates bring together refined aesthetics and uncompromising performance.

Powered by advanced GLE Technology, Greenlam Exterior Clads are engineered to perform beyond expectations – resisting fire, extreme weather and bacterial growth with uncompromising strength. So what you create outside remains as extraordinary as what lies within.

Built for enduring durability and long-term reliability, they empower you to design facades that stand apart – year after year.

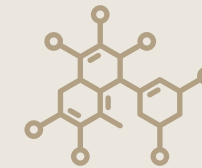
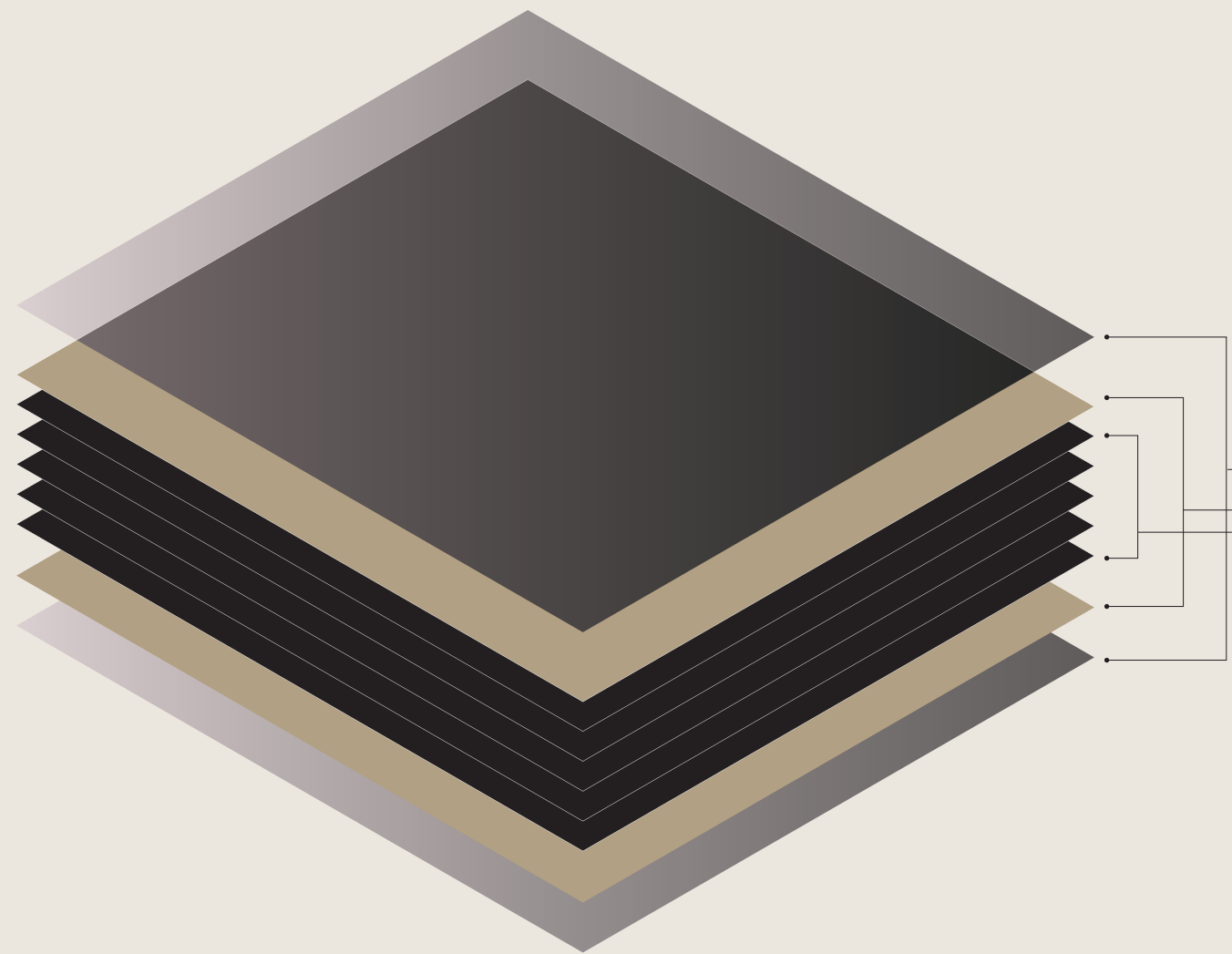
MANUFACTURED USING



*Images used are for representation purpose only.

Product Construction

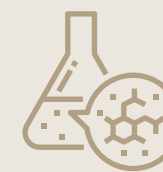
Greenlam Clads are self-supporting High Pressure Laminates (HPL) with a decorative surface that is suitable for exteriors. It is fade-resistant, weather-proof, and compliant to the standards of EDF (EN 438-6 Exterior Grade Severe Use Flame Retardant) which is the best in this classification. The polymeric resins used are made with Non-Halogenated Fire Retardant chemicals which make the Greenlam Clads fire-retardant.



High Quality UV Resistant
Polymeric Film on both sides

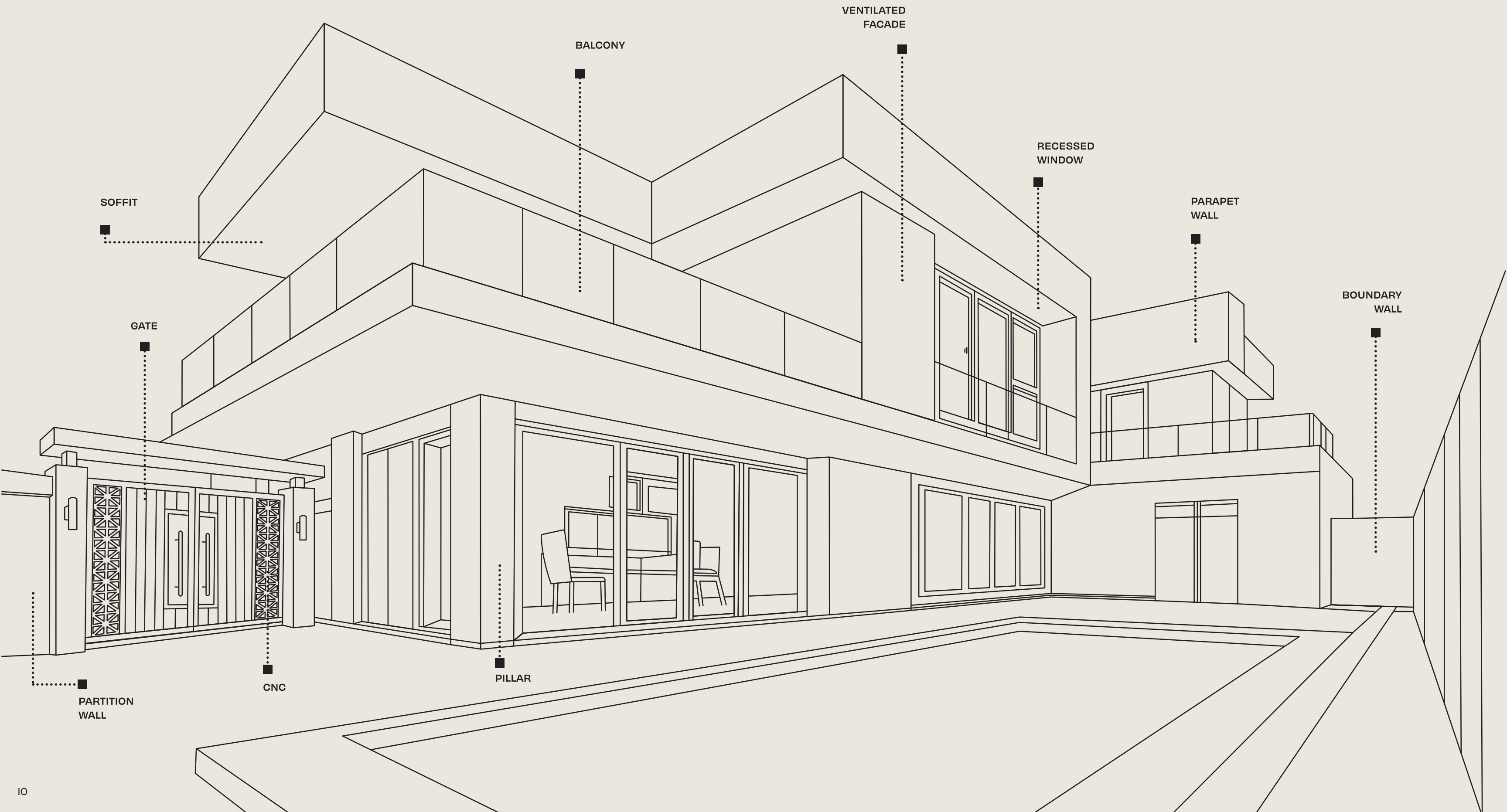


Both sides special exterior grade
décor paper impregnated with
premium quality Amino-Plastic
Thermosetting Resins



Kraft Core layers treated
with superior grade Phenolic
Thermosetting Resin containing
Halogen Free FR Additives

Application Areas





BALCONY



BOUNDARY WALL



SIDE ELEVATION



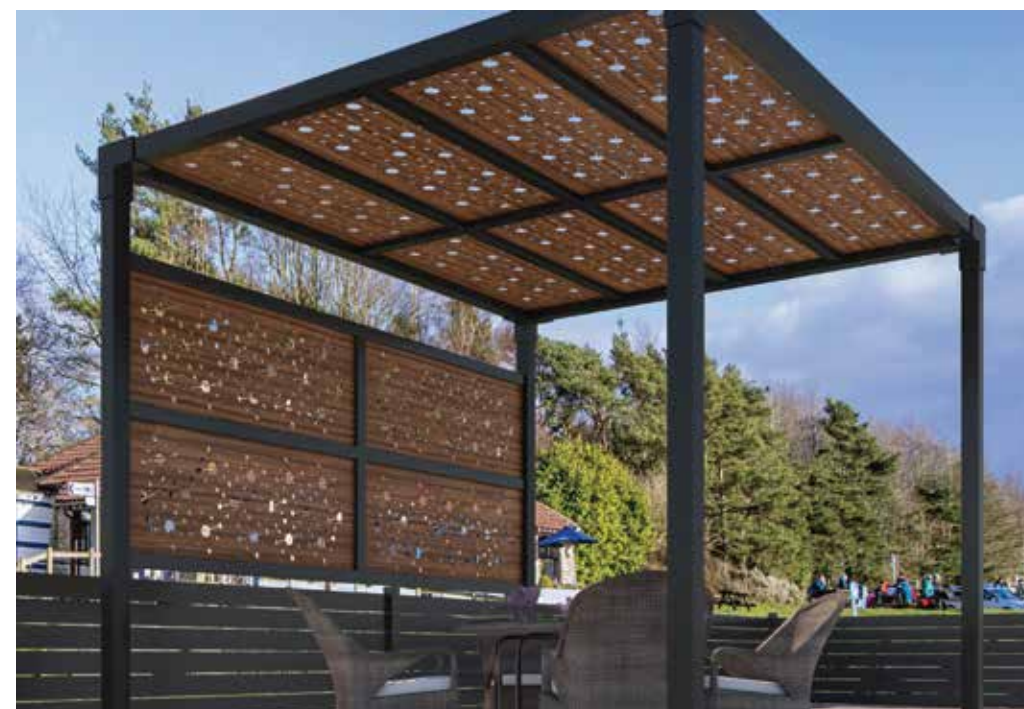
SOFFIT



FACADE



PARTITION WALL



PERGOLA










PILLAR

*Images used are for representation purpose only.

What makes us class apart

	HARDWOOD	ACP	GLASS	STONE	TILE	GREENLAM CLADS
Fire Retardant			✓	✓	✓	✓
Easy to Maintain		✓			✓	✓
Quick & Easy Installation	✓	✓			✓	✓
Durability				✓	✓	✓
Anti-Graffiti						✓
Energy Efficient						✓
Chemical Resistant						✓
Anti-Dust						✓
Corrosion Resistant						✓
Customisable						✓

			
FIRE RETARDANT	EXCELLENT ANTI-GRAFFITI PROPERTIES	CHEMICAL RESISTANT	ENERGY EFFICIENT
			
MATCHING RIVETS	ANTI-DUST	MOISTURE RESISTANT	ENVIRONMENT FRIENDLY
			
LOW VOC EMISSION	RESISTANCE TO ACID RAINS	CORROSION RESISTANT	TERMITE RESISTANT
			
ANTI-BACTERIAL & ANTI-VIRAL	ACOUSTIC RESISTANCE	WITHSTANDS EXTREME TEMPERATURES FROM -60°C TO +80°C	SUPERIOR LIGHT FASTNESS PERFORMANCE (UV RESISTANCE)

SIZE	THICKNESS*	TEXTURE
4.25' x 10' 1300mm x 3050mm	6mm 8mm 10mm	Jupiter & Suede

I N T R O D U C I N G

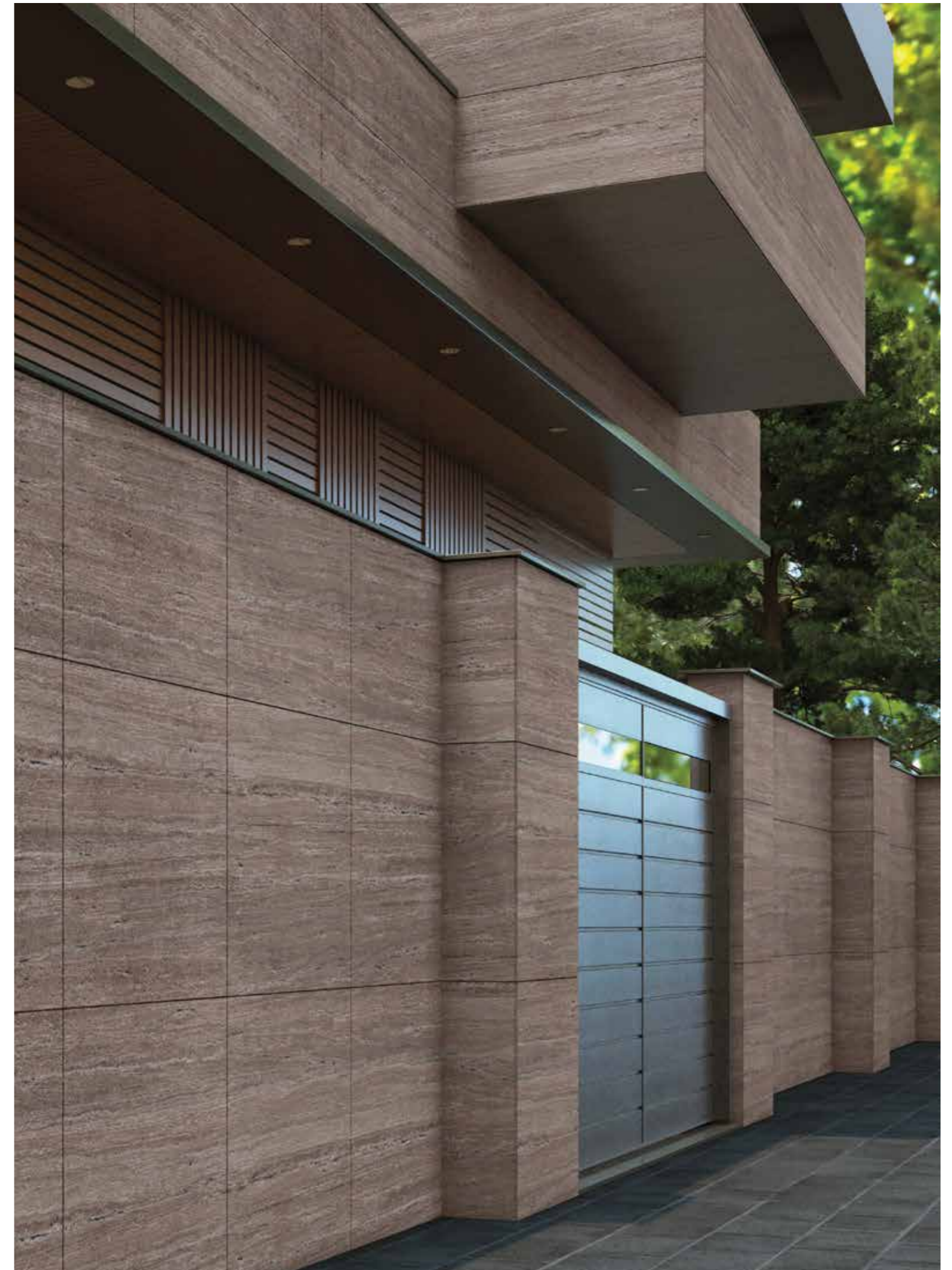
Jupiter – Stone Finish

NEW
TEXTURE



These stone inspired textures lend an immediate sense of finesse to exteriors. Their natural depth, subtle grain, and timeless character turn façades into statements of purposeful creations. With patterns inspired by real stone, Greenlam Clads elevate exteriors with contemporary and unmistakably extraordinary crafts.

First
Impressions
to
*Timeless
Expressions*

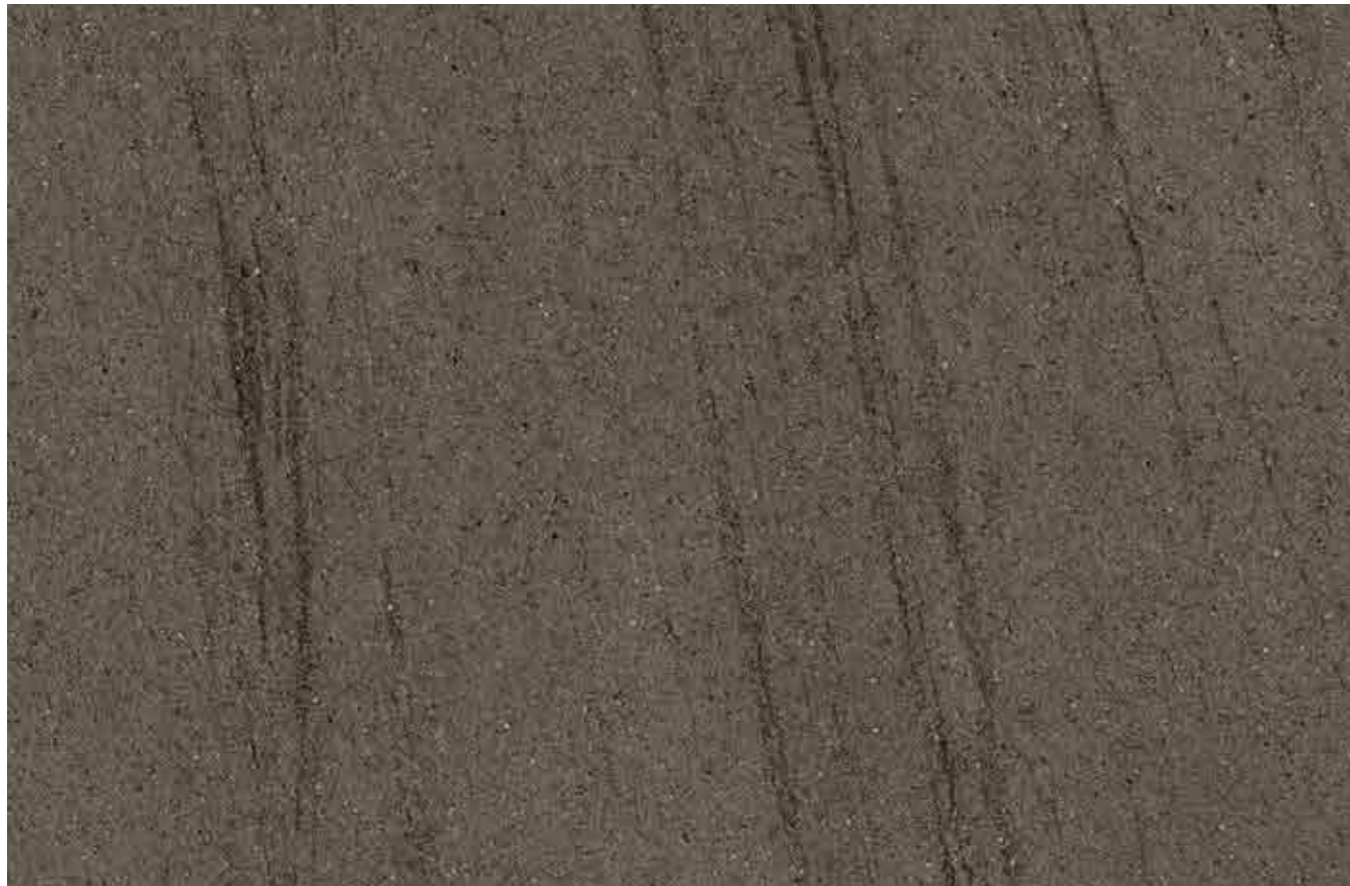


*Images used are for representation purpose only.



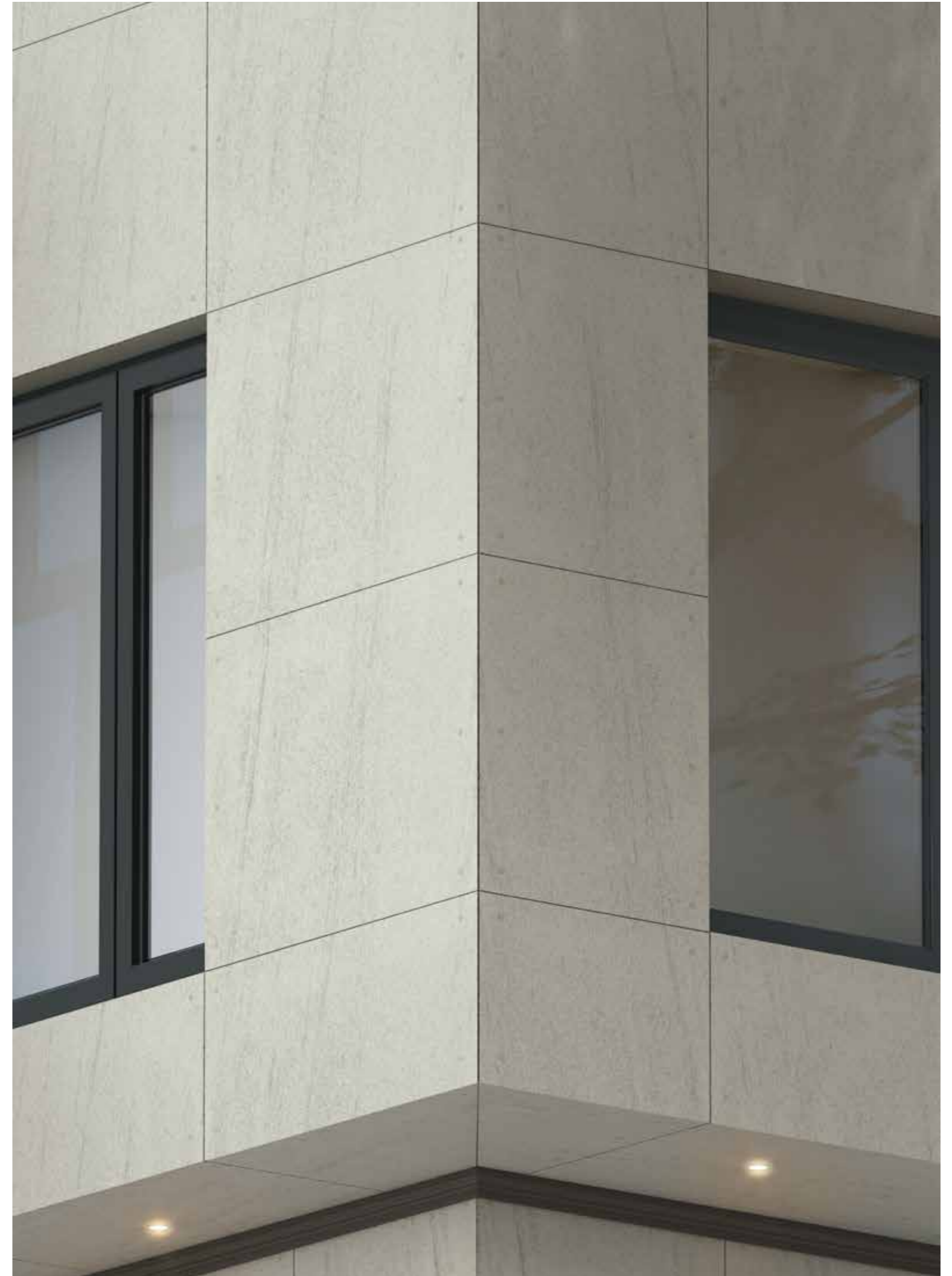
N

9214 JUP
Ercolan White



N

9215 JUP
Ercolan Grey



*Images used are for representation purpose only.



N

9271 JUP
Clear White



N

9279 JUP
Rock Brown



N

9209 JUP
Russet Stein



N

9213 JUP
Ferrous Cemento



N

9217 JUP
Travona Beige



N

9218 JUP
Trave Taupe



N

9219 JUP
Gravento



Suede Finish

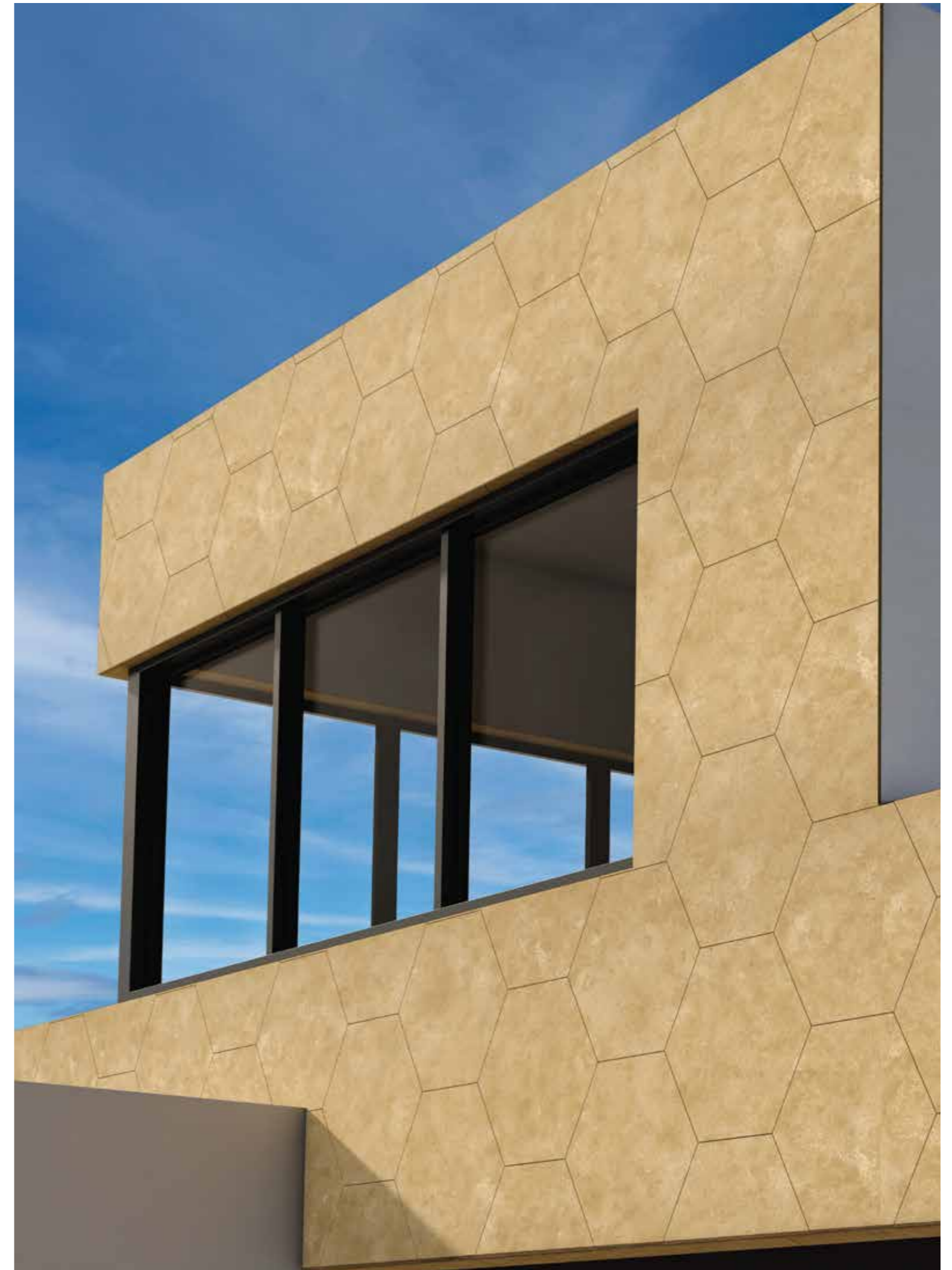
REFINED
SOPHISTICATION



Soft to the eye and smooth to the touch, Suede Finish brings a refined sophistication to exteriors. Its velvety texture and understated charm create façades that exude warmth and quiet luxury. With a finish that balances subtle elegance and modern appeal, Greenlam Clads transform surfaces into timeless expressions of contemporary design.



First Impressions
to
Timeless Expressions

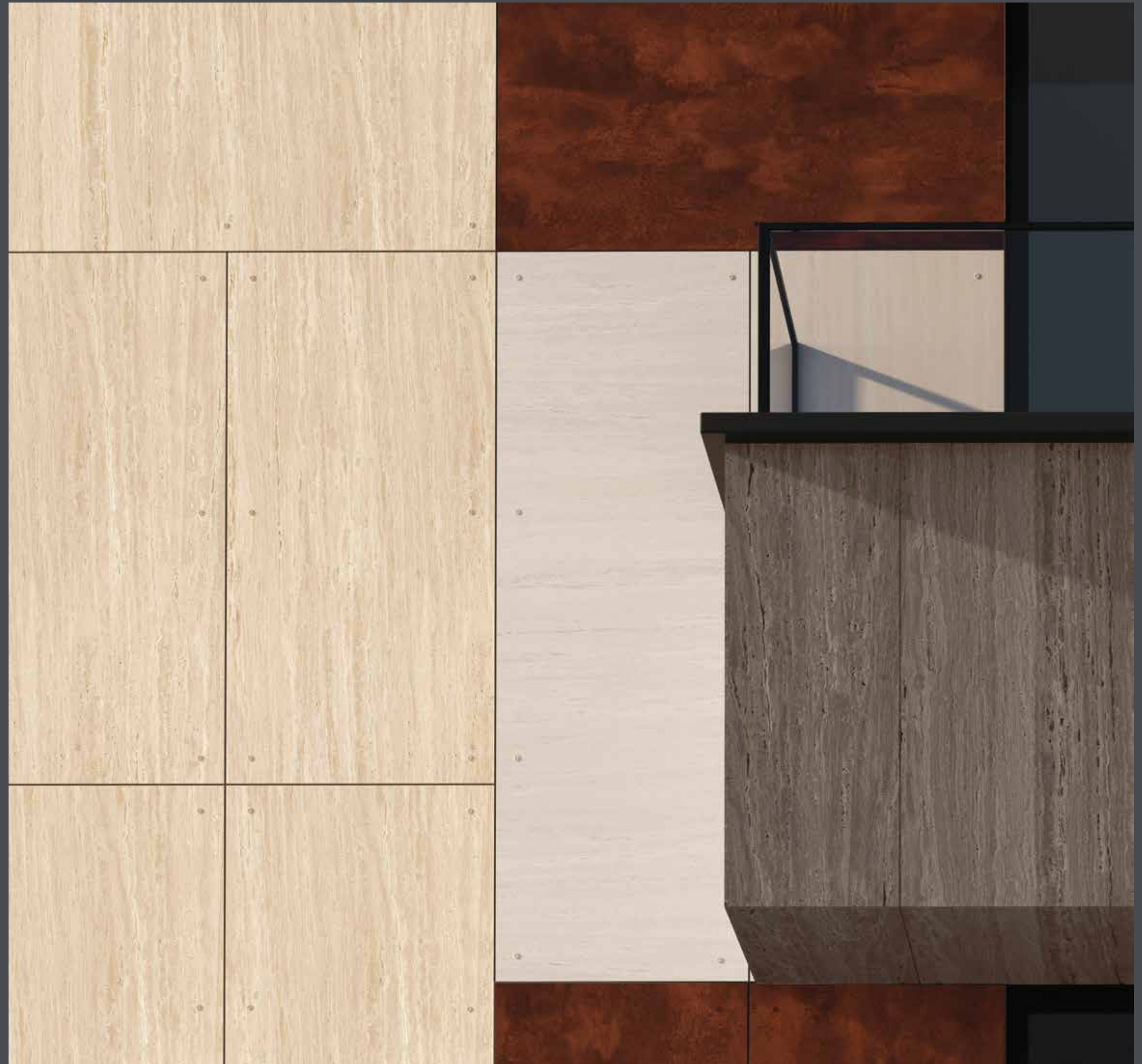


*Images used are for representation purpose only.



Patterns

Breaking away from convention, Patterns infuse exteriors with bold imagination and artistic flair. Their dynamic patterns, and fluid forms transform façades into canvases of creativity. With designs that spark curiosity and redefine modern aesthetics, Abstract Patterns bring exteriors alive with originality and unmistakable distinction.



*Images used are for representation purpose only.



9207 SUD
Harbour



9208 SUD
Pietra



*Images used are for representation purpose only.



9205 SUD
Citron Stone



9201 SUD
Premio



9217 SUD
Travona Beige



9218 SUD
Trave Taupe



9219 SUD
Gravento





9212 SUD
Rock Salt



9214 SUD
Ercolan White



9215 SUD
Ercolan Grey



9210 SUD
Lava Moreno



9209 SUD
Russet Stein

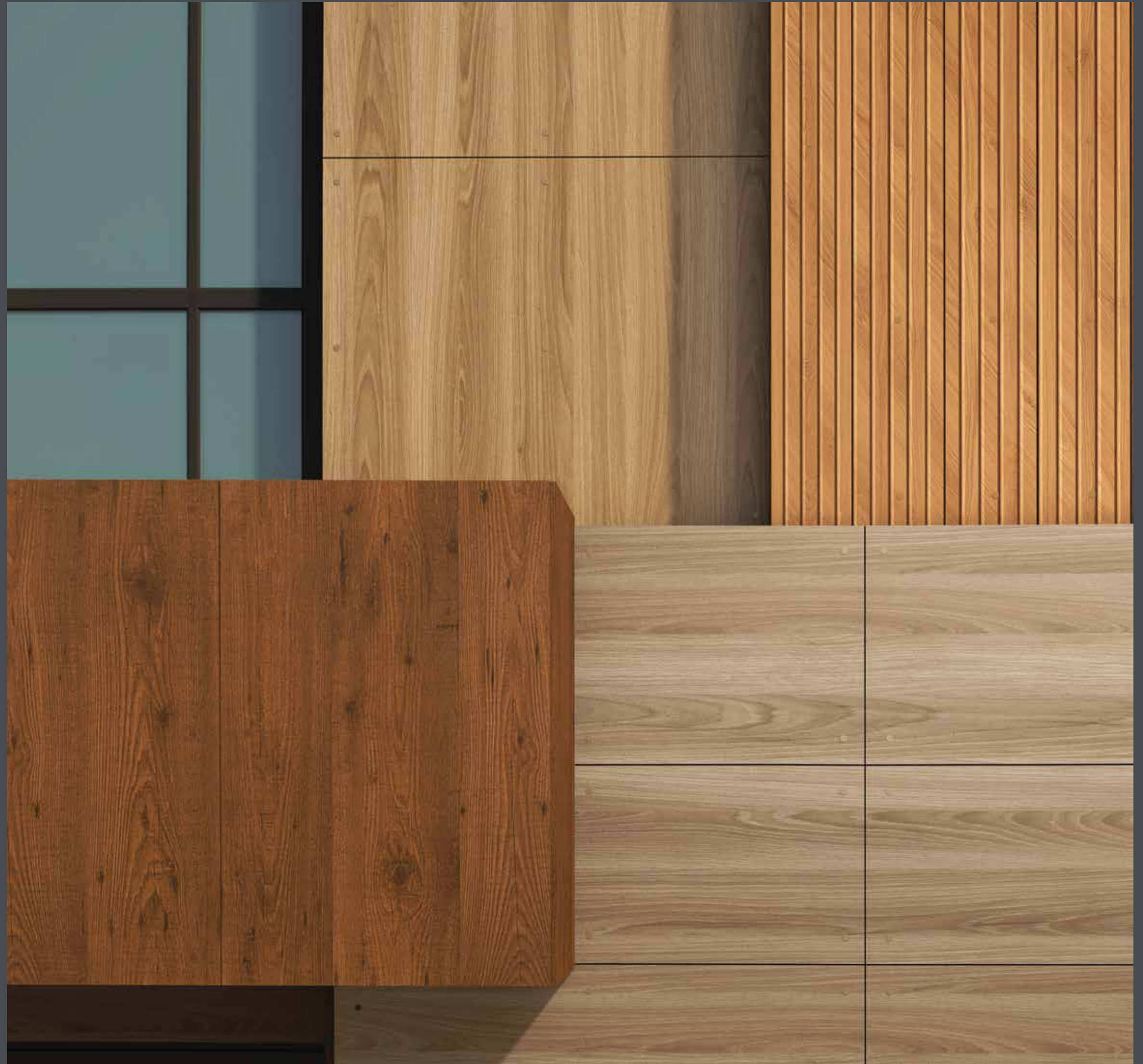


9213 SUD
Ferrous Cemento



Woods

The Woods bring crafted richness to exteriors. The layered grain patterns and natural tonal variations introduce depth and warmth, giving exteriors a unique character. Designed to echo the elegance of real wood while performing far beyond it, Woods make exteriors feel thoughtful, elevated, and truly extraordinary.



*Images used are for representation purpose only.



9116 SUD
Eden Oak



9117 SUD
Sunburn Oak



9107 SUD
Lorraine Walnut



*Images used are for representation purpose only.




9105 SUD
Caramel Streak



9106 SUD
Coral Streak






9110 SUD 
Pure Walnut



9111 SUD 
Novacento Pine



9112 SUD 
Trusted Teak



9108 SUD 
Arch Wood



9104 SUD 
Enigma



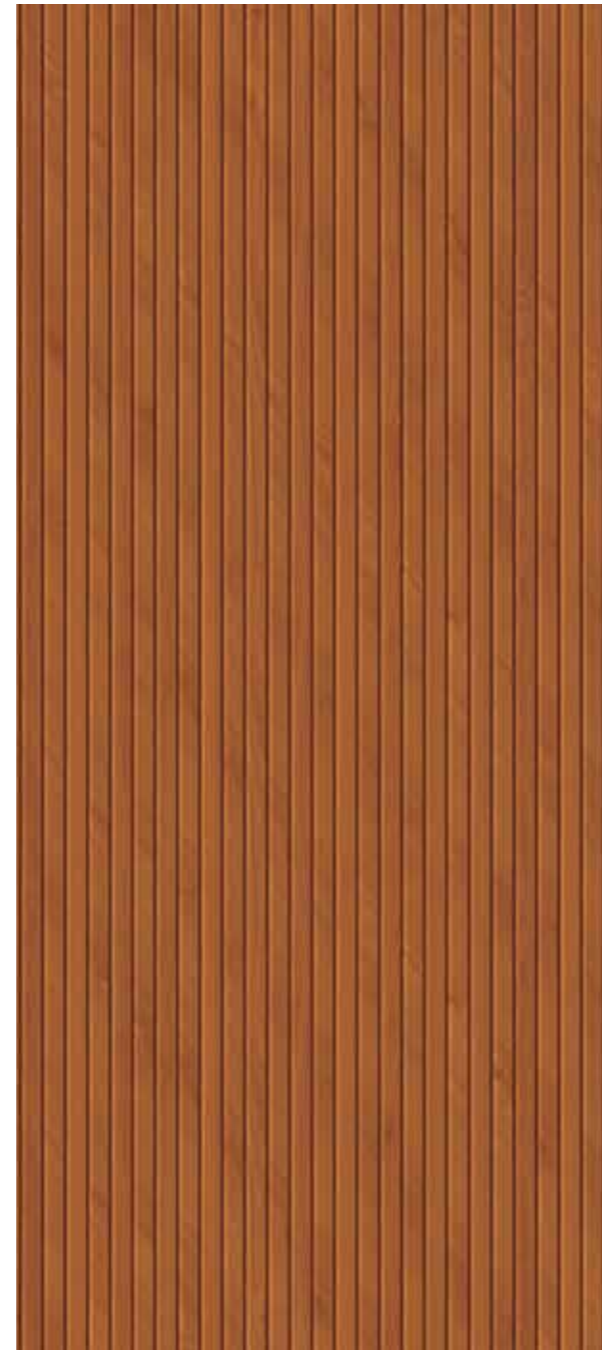
9118 SUD 
Morgan Oak

3D Louvers



Unique Expressions, The Way You Imagined It.

Louvers transform façades into living compositions - adding depth, rhythm, and ever-changing play of light and shadow. More than simple fins, they bring precision in form, lightness in design, warmth through texture, and modernity in geometry. Executed in Exterior HPL, these three Dimensional louver designs seamlessly blend shade, openness, and character, turning buildings into dynamic architectural statements.

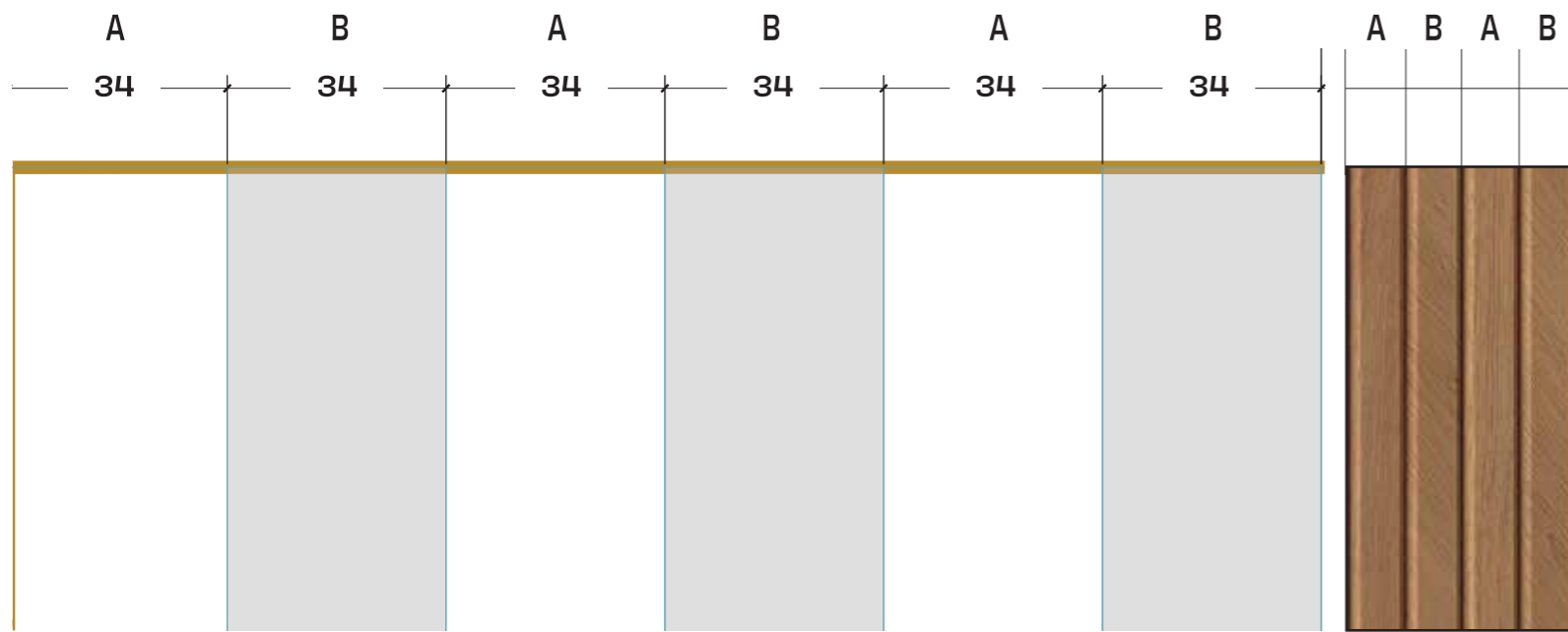


*Images used are for representation purpose only.

Dynamic
Designs
TO
Timeless
Expressions



9351 SUD Timber Slat  **9352 SUD** Nova Slat 



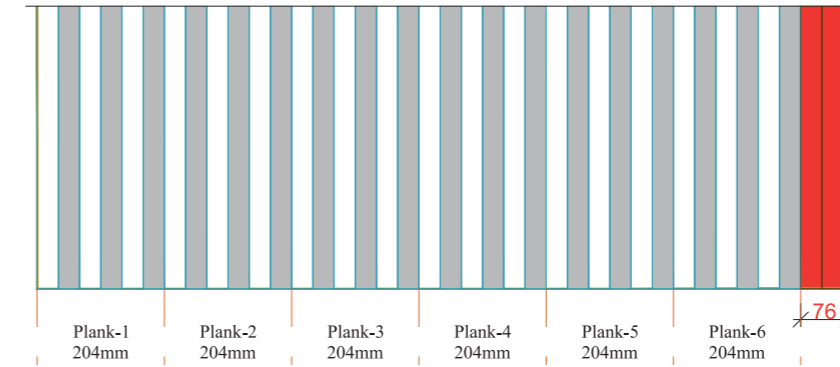
CAD representation showing alternate slats in white (A) and Grey (B)

Panel cutting recommendations.

Designed for seamless repeat across 1300mm panel width.

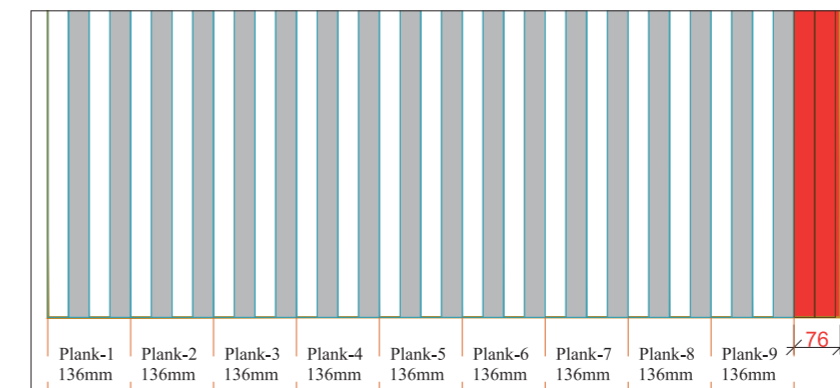
1. 204mm cut width

6 slats per plank



2. 136mm cut width

4 slats per plank



Advisory

- Maintain a uniform 6 mm gap between all adjacent panel edges.
- Ensure consistent orientation during panel installation.
- Avoid arbitrary cutting, rotation, or re-sequencing, as this may disrupt visual alignment and pattern continuity.
- Panels may only be cut in multiples of the specified widths (e.g., 2x, 3x, etc.).
- The final panel layout must be reviewed and approved by the Architect/ Fabricator, considering site conditions and overall design intent.
- Material wastage will vary depending on the cutting pattern adopted.

Note: Highlighted area represents wastage as indicated.



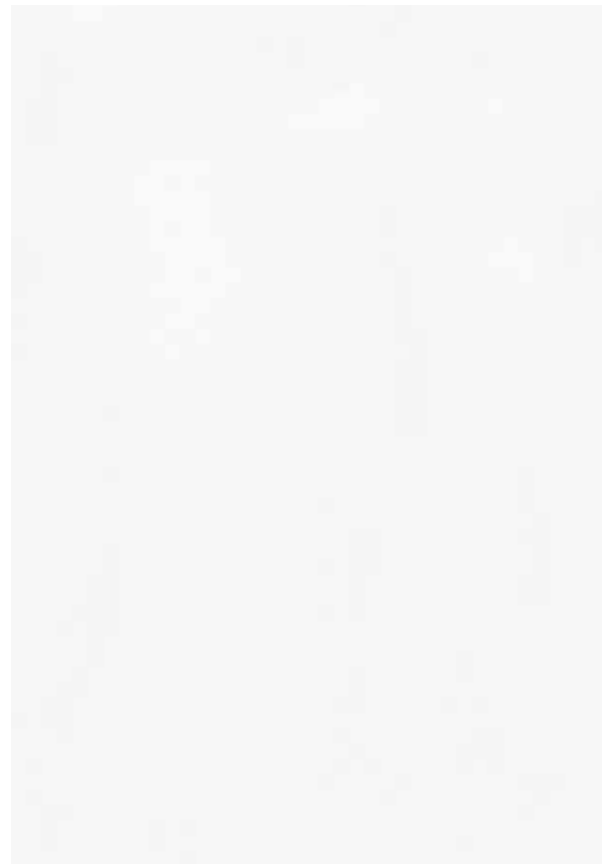


Colours

Clean tones and uniform surfaces bring form, proportion, and structure to take centerstage, letting exteriors speak without distraction. Designed for bold compositions and precise detailing, these solids lend exteriors a strikingly extraordinary presence that feels modern and confident.



*Images used are for representation purpose only.

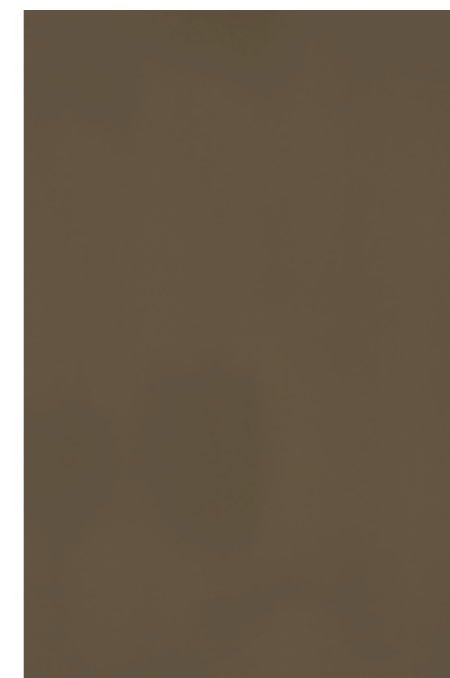
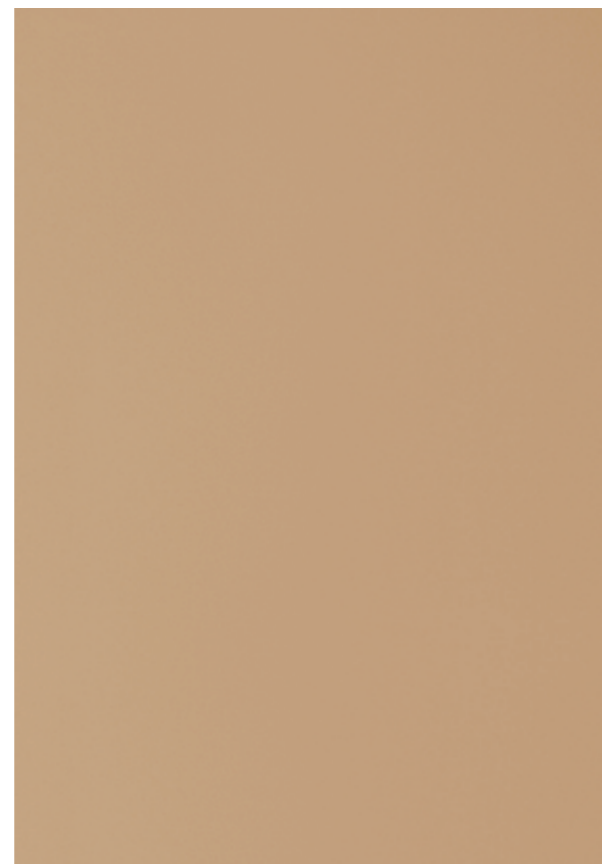


N

9251 Alpino White

9271 Clear White

*Images used are for representation purpose only.



9276 Cane

9277 French Beige


9278 Sage

9279 Rock Brown

9274 Choco Brown



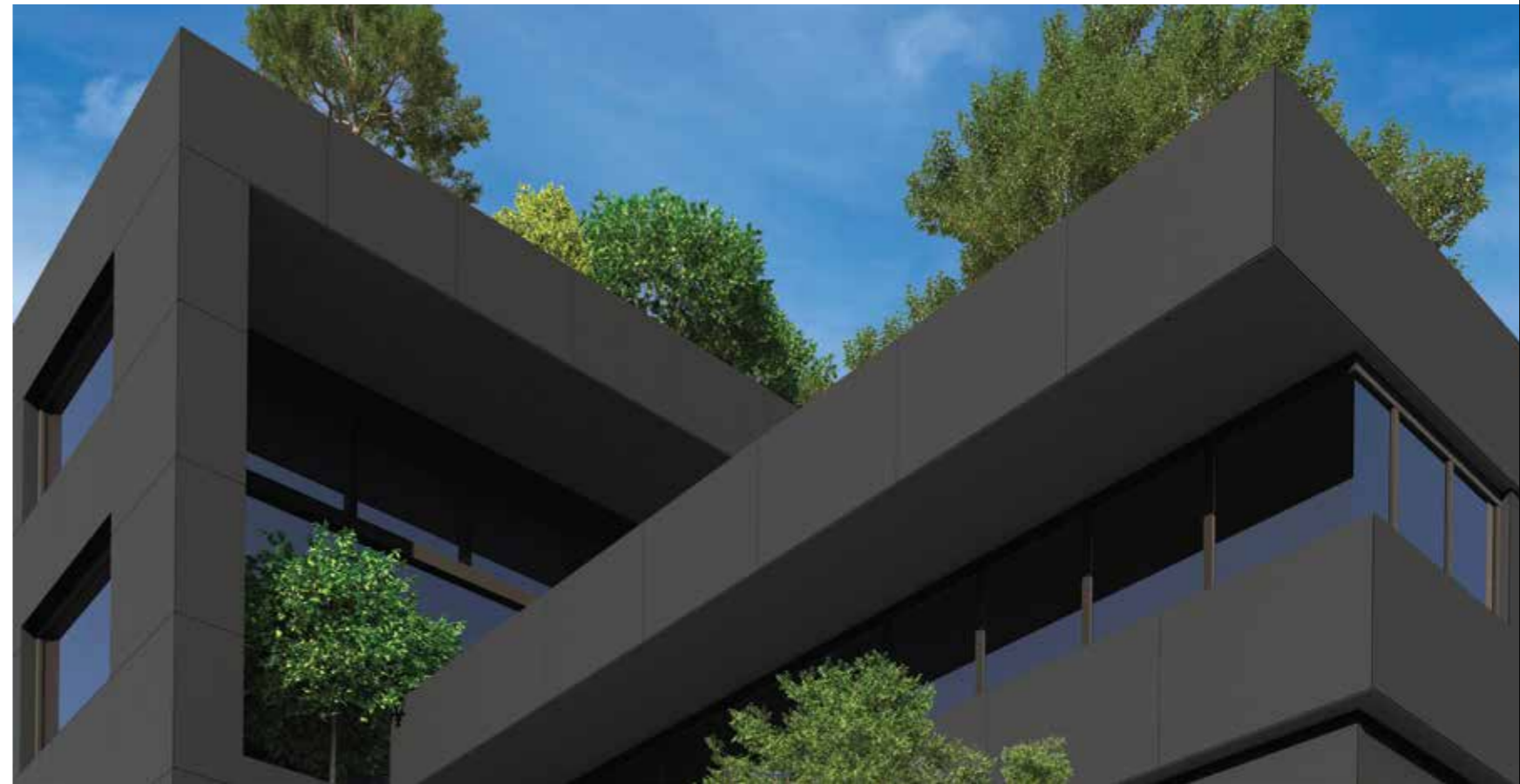
N

9254 Steep Grey 

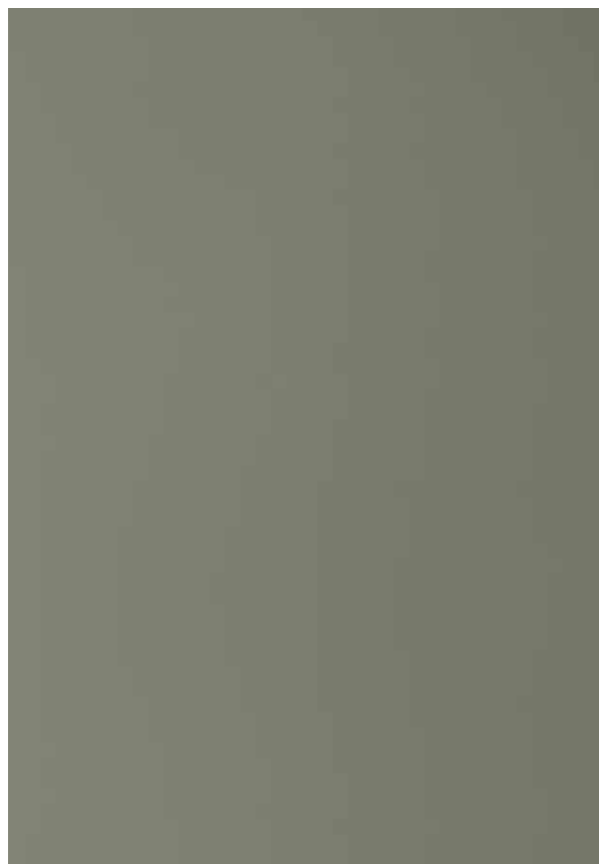


N


9283 Mink Grey 




*Images used are for representation purpose only.



N

9253 Cloudburst 



9273 Murky Grey 



9272 Oyster 



N

9282 Battalion Grey 



N

9257
Mock Orange

9280
Mineral Yellow

N

9261
Poseidon

N

9262
Posy Green



N

9256
Prairie Sand

9275
Vermilion Red

N

9259
Rosebud

N

9258
Baked Clay

Bring Your Dream Facade to Life



Greenlam Clads Design Lab – Inspiration Delivered in 72 Hours

Transform the way you imagine your exteriors with Greenlam Clads Design Lab. Whether it's a sleek corporate building or a stylish home, Design Lab helps you see your ideas come alive before you build.

With Greenlam Clads Design Lab, you don't just imagine possibilities - you experience them. Get your dream look today!



SCAN TO BEGIN YOUR JOURNEY

1

Click a picture of your residential or commercial project for which the consultation is required

2

Go to [Greenlamclads.com](https://www.greenlamclads.com) and get started with Design Lab Service.

3

Choose from a wide range of innovative cladding options and upload the image along with required details.

4

Get your customised design inspiration delivered in 72 hours, right in your mailbox.



BEFORE



AFTER

Technical Specs

Product: Greenlam Exterior Clads 1300mm x 3050mm

PROPERTIES	TEST STANDARD, EN 438 PART 2 & 6: 2016	UNIT	SPECIFIED VALUES	GREENLAM VALUES
Classification	EN 438-6- 4		EXTERIOR, SEVERE USE FLAME RETARDANT GRADE, EDF	
PHYSICAL & DIMENSIONAL PROPERTIES				
Thickness Variation	EN 438-2 - 5	mm	2.0 ≤ t < 3.0 : ± 0.20 3.0 ≤ t < 5.0 : ± 0.30 5.0 ≤ t < 8.0 : ± 0.40 8.0 ≤ t < 12.0 : ± 0.50 12.0 ≤ t < 16.0 : ± 0.60 16.0 ≤ t < 20.0 : ± 0.70 20.0 ≤ t < 25.0 : ± 0.80 25.0 ≤ t : As agreed	Complies
Surface quality (Spot, Dirt etc.)	EN 438-2 - 6 5.2.4	mm ² /M ²	2.0(max)	Complies
Fibers, Hairs & Scratches etc.		mm ² /M ²	20.0(max)	Complies
Length and Width Variation	EN 438-2 - 6	mm	+10mm /-0mm	+5mm /-0mm
Edges Straightness	EN 438-2 - 7	mm/M	1.5 (max)	≤ 1
Edges Squareness	EN 438-2 - 8	mm/M	1.5 (max)	≤ 1
Flatness	EN 438-2 - 9	mm/M	2.0 ≤ t < 6.0 : 8.0 6.0 ≤ t < 10.0 : 5.0 10.0 ≤ t : 3.0	Complies
Density	EN ISO 1183 -1:2019	g/cm ³	1.35	1.38
Dimensional Stability at Elevated Temperature	EN 438-2 -17			
Longitudinal Direction		%	0.30 (max)	0.18
Transverse Direction		%	0.60 (max)	0.38
MECHANICAL PROPERTIES				
Resistance to Wet Conditions,	EN 438-2-15			
Increase in Mass		%	8.0 (max)	Complies
Surface Rating		Rating	4 (min)	Complies
Edge Rating		Rating	3 (min)	Complies
Resistance to Impact by Large Diameter Ball				
Drop Height	EN 438-2 -22	mm	1800	2000
Diameter of Indentation		mm	10 (max)	7
Flexural Strength	EN ISO 178: 2019	Mpa	80 (min)	100
Flexural Modulus	EN ISO 178: 2019	Mpa	9000(min)	10700
Thermal Conductivity	EN 12524: 2000	W/M ² K	No requirement	0.24
Resistance to Fixing (Screw pull out strength)	ISO 13894-1: 9	N	2000 (min)	Meets
LIGHT FASTNESS & WEATHER RESISTANCE				
Resistance to Climatic Shock	EN 438-2-19	Rating	Appearance -4 (min)	4
Flexural Strength Index		Index	D _s - 0.80 (min)	Meets
Flexural Modulus Index		Index	D _m - 0.80 (min)	Meets
SURFACE PROPERTIES				
Resistance to UV Light, after 1500 hours exposure	EN 438-2-28	Rating	Grey Scale contrast-3 (min) Appearance- 4 (min.)	3-4 4-5
Resistance to artificial weathering including light fastness, after 650 MJ/M ² Radiant exposure	EN 438-2-29	Rating (After 3000 Hours as per standard)	Grey Scale contrast-3 (min) Appearance- 4 (min.)	3-4 4-5
FIRE PERFORMANCE				
Reaction to Fire	EN 13501-1- 2017	Euro class	≥ 6mm thick: B-s2, d0 < 6mm thick: C-s2,d0 or better	B-s1, d0
Surface Spread of Flame	UL 723	Class	A	A
Flame Spread Index		Index	0-25	Meets
Smoke Development Index		Index	0-450	Meets
Calorific Value	ISO 1716: 2010	MJ/kg	19.91 (max)	Meets
CORROSION RESISTANCE				
Resistance to corrosion with 5% Sodium Chloride Spray (Salt Spray Test)	ASTM B 117	Hours	500 (min) (Industry Standard)	Exceeds 700
Resistance to Acid rain (of 10% HCL)		Hours	None	24
SOUND INSULATION CHARACTERISTICS IN BUILDING & BUILDING ELEMENTS				
Sound Transmission Class (STC)	IS: 9901 (Part III-1981, DIN: 52210 Part 1-1983 ISO: 10140Part II)/ ASTM-E-90	Rating	No Specification	28

Note: Greenlam products are manufactured thoroughly to standards. The values given above are to the best of knowledge but without liability/warranty, expressed or implied.

CLASS (RATING): 1 = Surface Damage 2 = Severe appearance alteration
3 = Moderate Change 4 = Slight change visible from certain angle 5 = No Change

Note: Greenlam products are manufactured thoroughly to standards. The values given above are to the best of knowledge but without liability/warranty, expressed or implied.

Global Offices

Africa

Egypt
Ivory Coast
Kenya
Morocco
South Africa

Americas

Miami
Philadelphia

Asia

Bangladesh
Hong Kong
India
Indonesia
Malaysia
Nepal
Philippines
Singapore
Sri Lanka
Thailand
Vietnam

Europe & UK

England
Germany
Italy
Poland
Romania
Spain
Switzerland

Middle East

Kingdom of Saudi Arabia
United Arab Emirates

Get in touch at info@greenlam.com



SCAN TO DOWNLOAD
E-BROCHURE



SCAN TO DOWNLOAD
INSTALLATION MANUAL



SCAN TO DOWNLOAD
INSPIRATIONAL BOOKLET



GLOBAL HEADQUARTERS :
2nd Floor, West Wing, Worldmark 1, Aerocity,
IGI Airport Hospitality District,
New Delhi - 110 037, India.

T: +91 11 4279 1399
E: info@greenlam.com
W: www.greenlamindustries.com



